

- Fence lines
- Water line
- Productive plant guilds
- Livestock yards
- Header tanks
- Existing trees
- Existing dam
- House & shed yard

**Mentha australis – River mint**  
Mass ground cover  
width to suit mower with catcher

**Citrus australasica**  
Finger Lime-Caviar  
2 meter high  
1 meter wide

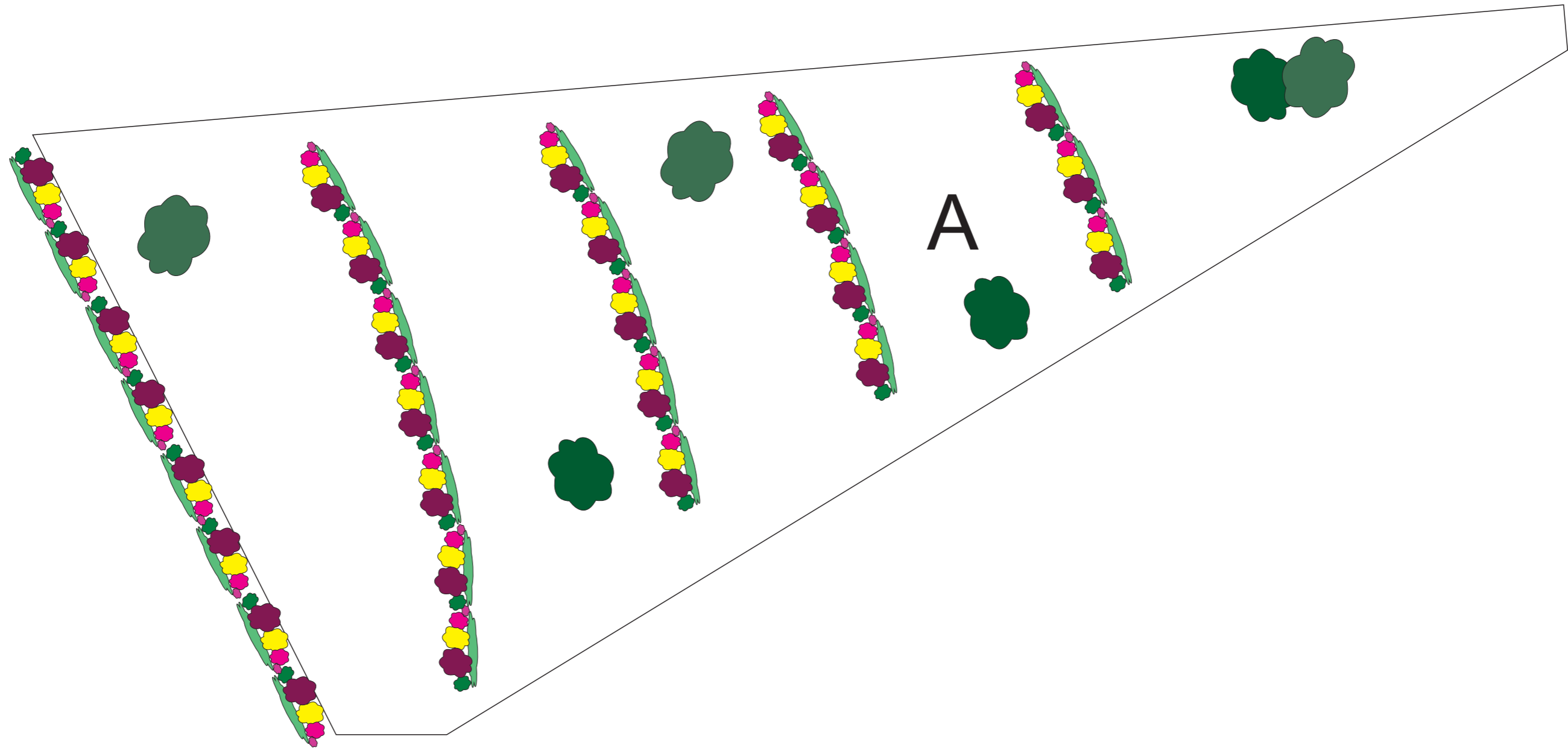
**Syzygium leuhmannii**  
Riberry  
2-15m high  
3-5m wide  
Ideal-5hx3w

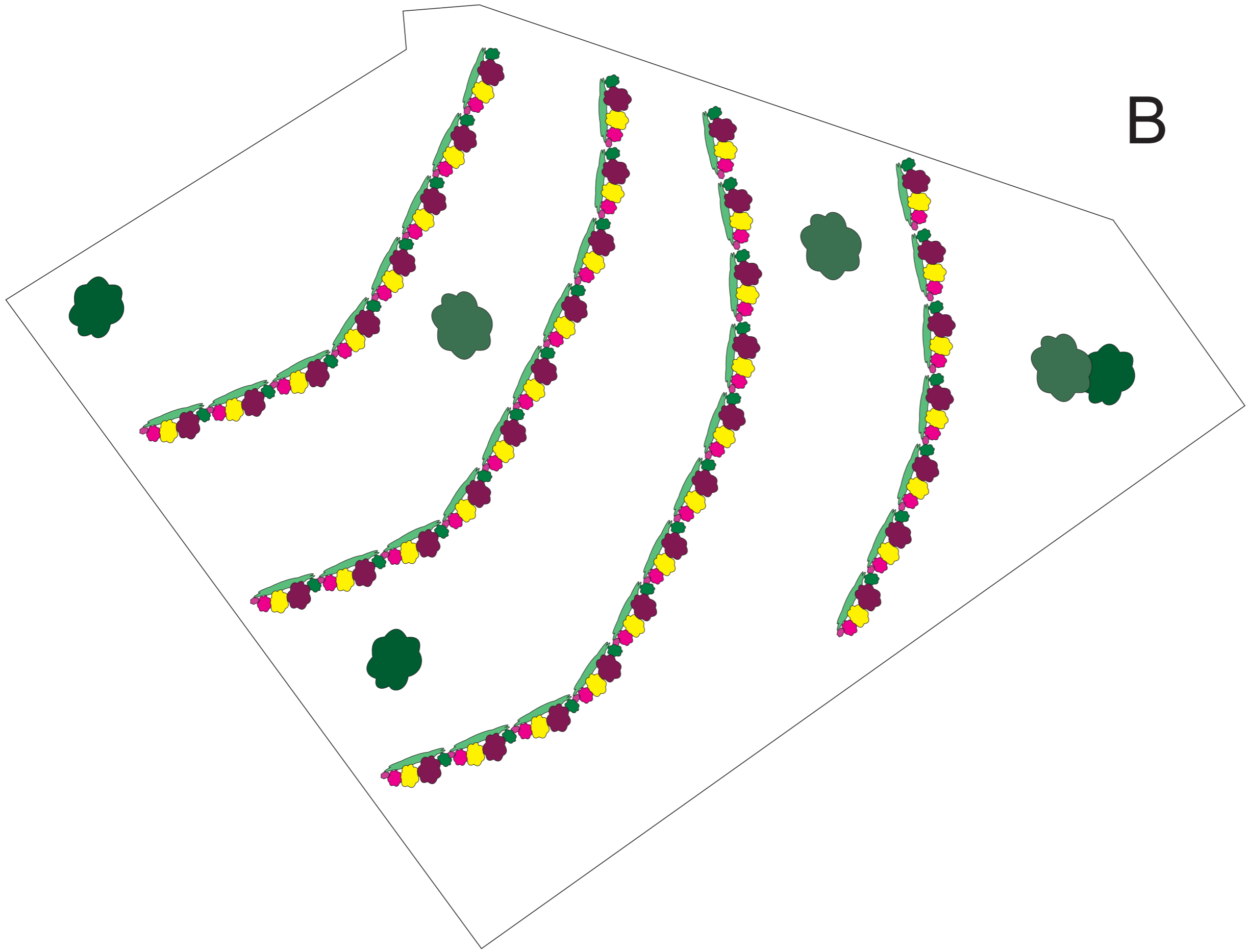
**Acronychia acidula**  
Lemon Aspen  
12-15 meter height  
4-8 meter width  
Ideal-6hx4w

**Austromyrtus dulcis**  
Midjym berry  
2 meter high  
1 meter wide

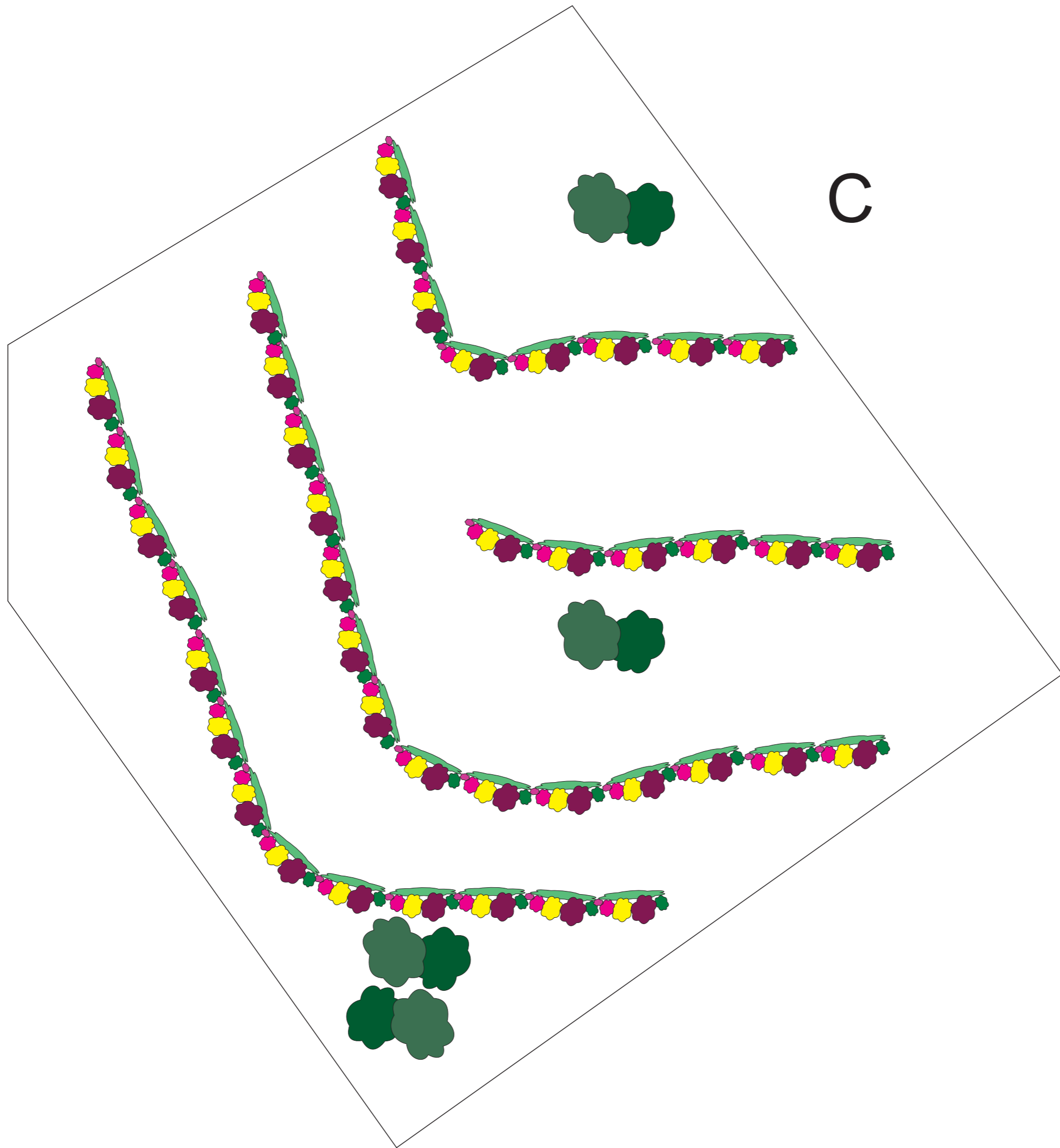
**Pleiogynium timoriense**  
Burdekin Plum  
12-20m high  
3-7m wide  
Ideal-7hx5w

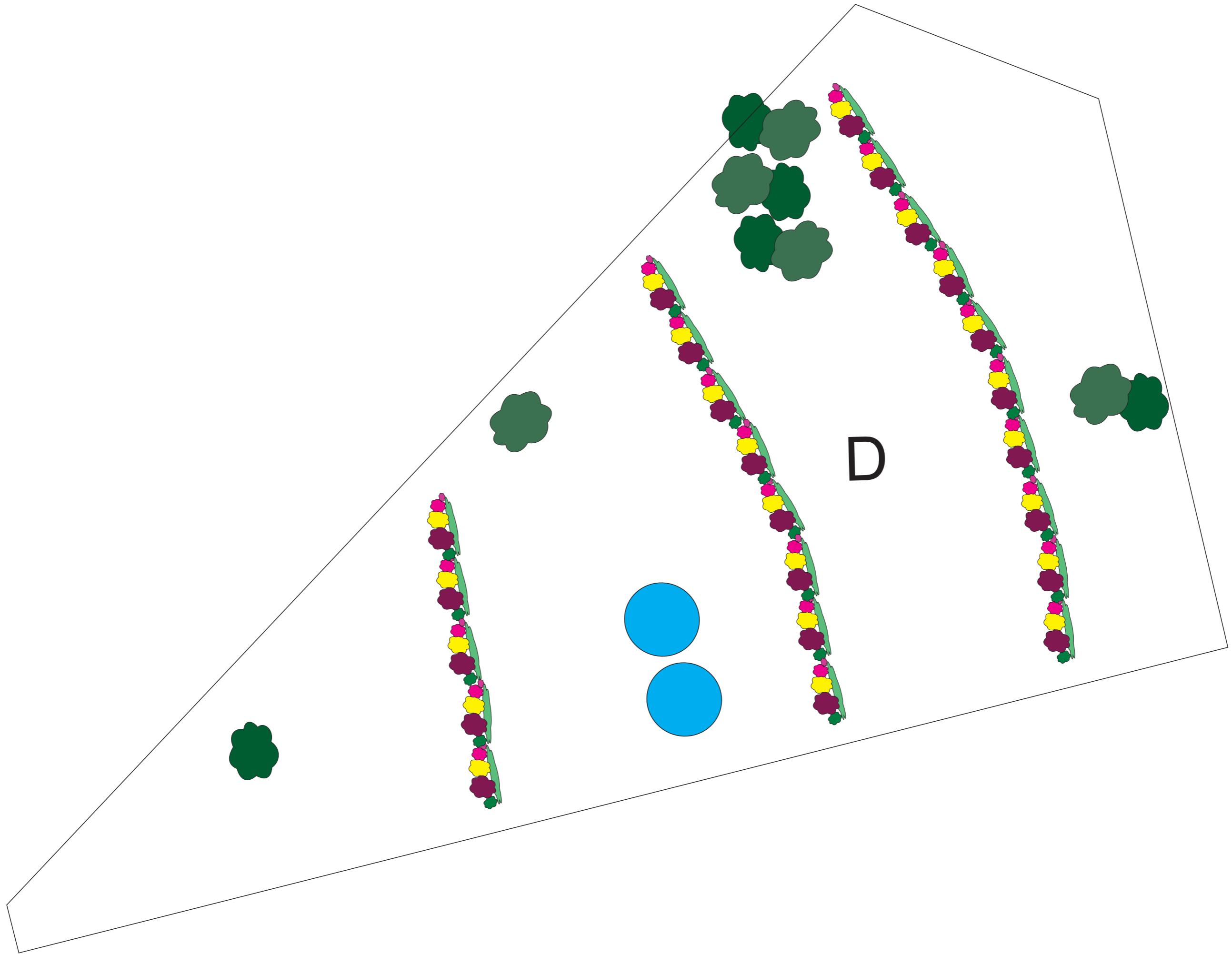
**Moringaceae**  
Moringa Oleifera  
3-5m high  
3-5m wide  
Harvest leaf & seed  
annually

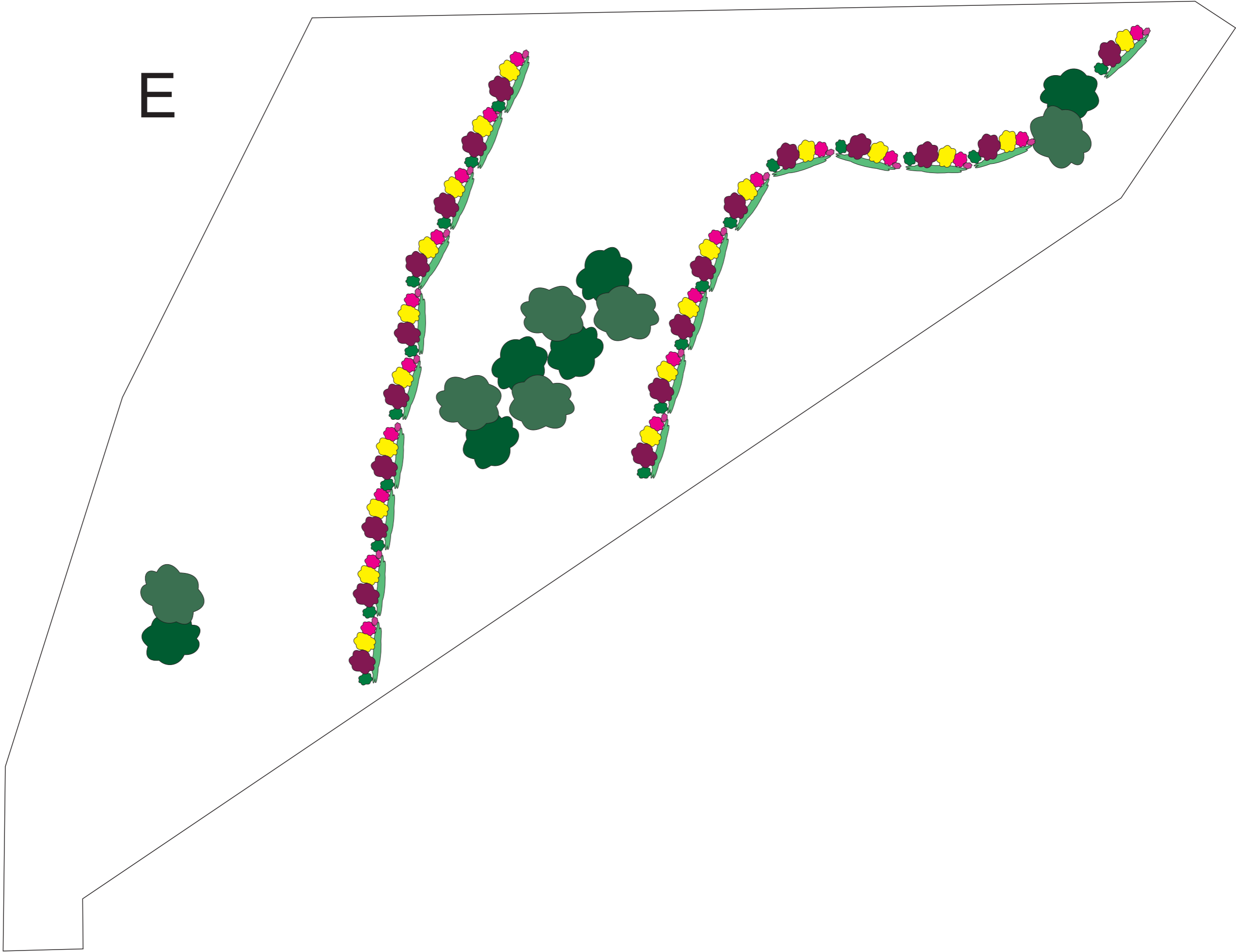




B



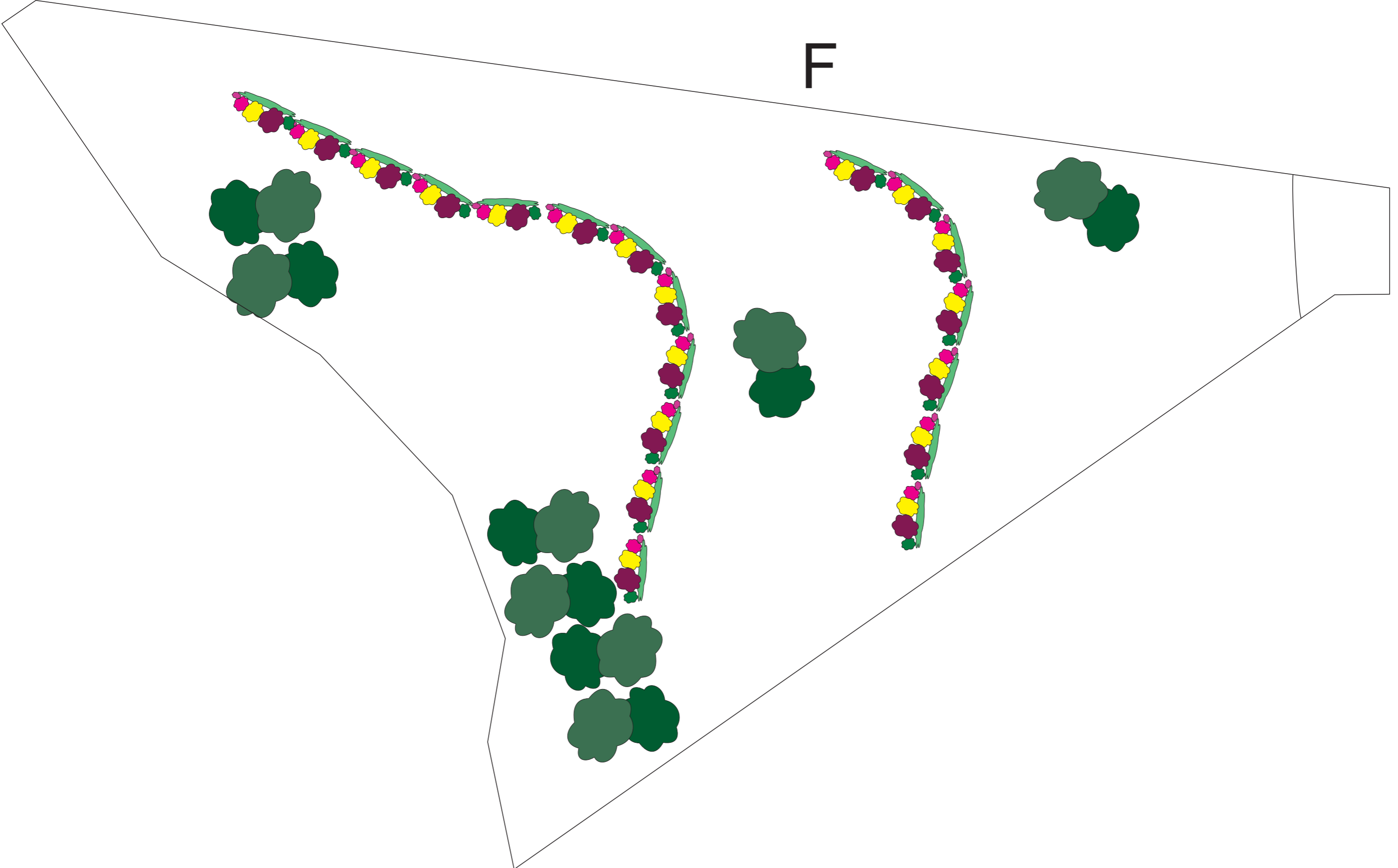




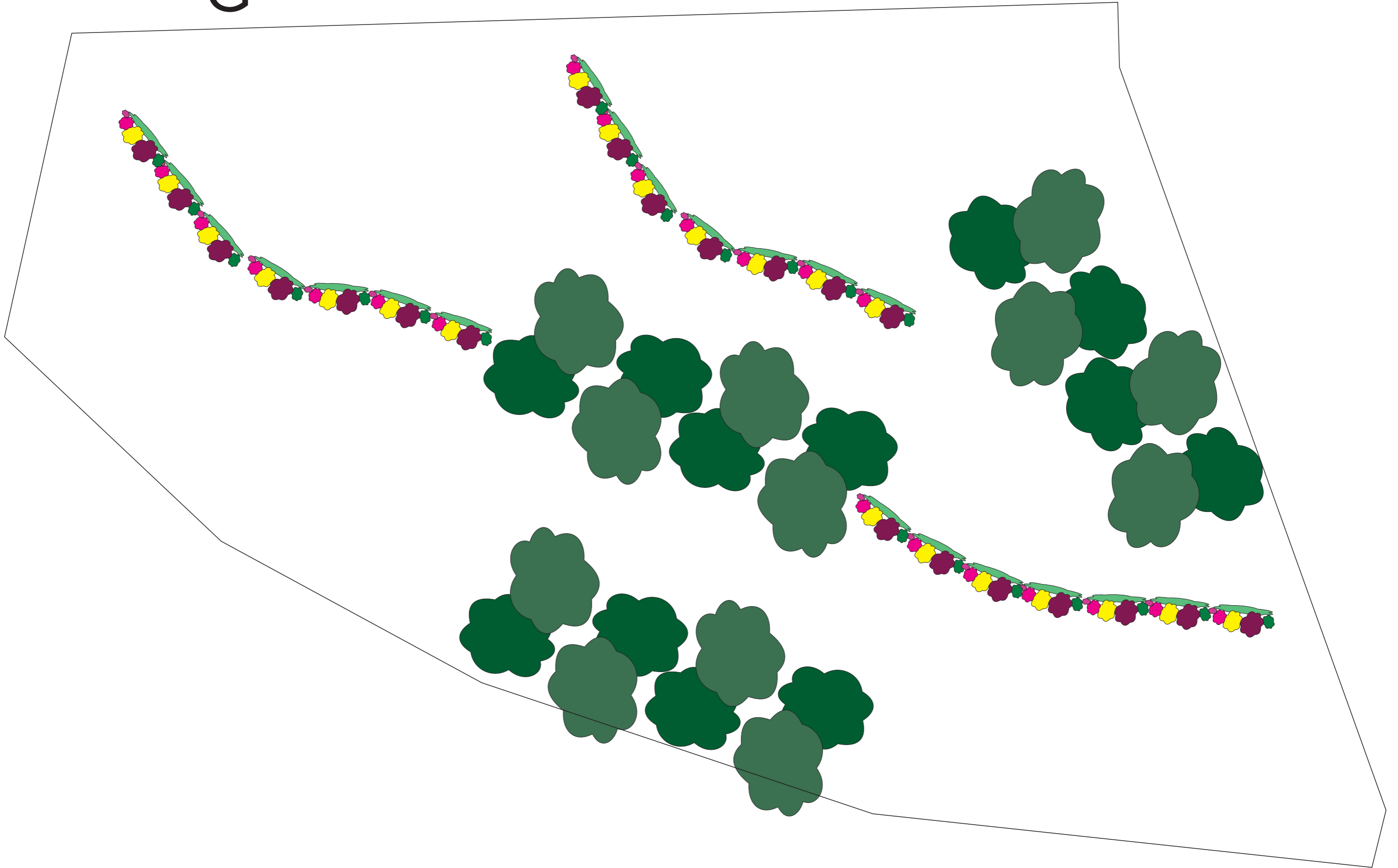
E



F



G



H

